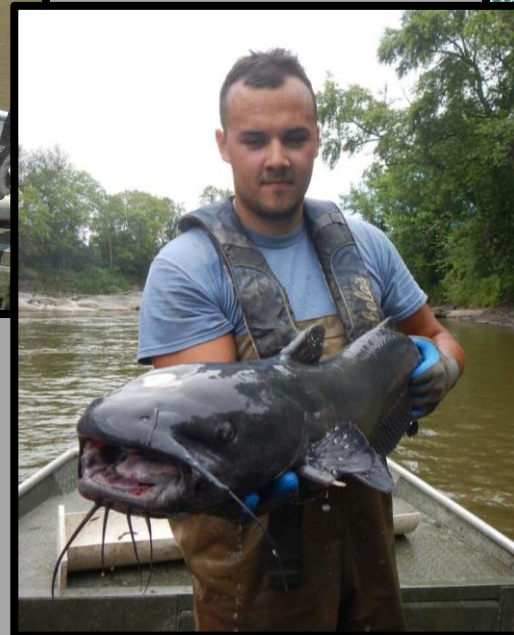


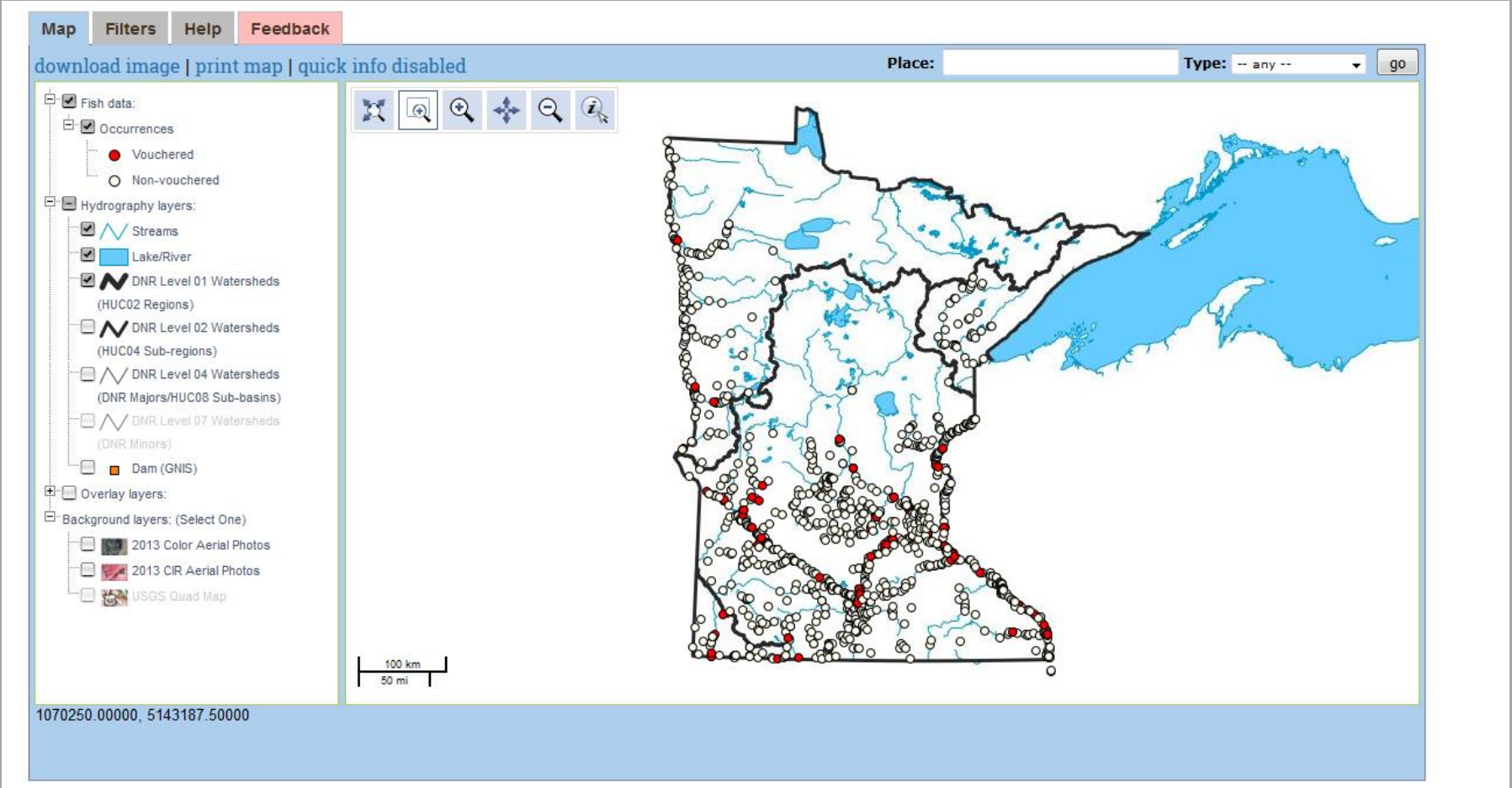
Distribution of Channel Catfish in Minnesota and an update on Minnesota River fisheries projects

Tony Sindt; Minnesota River Specialist



Minnesota Fish Distributions

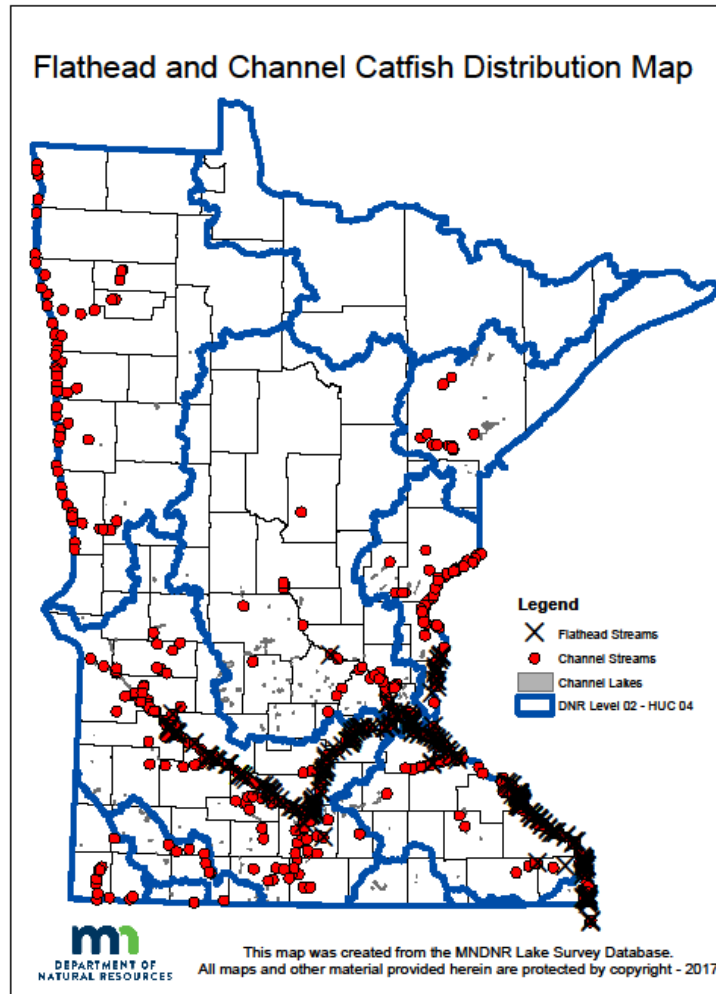
Fishes of MN Mapper



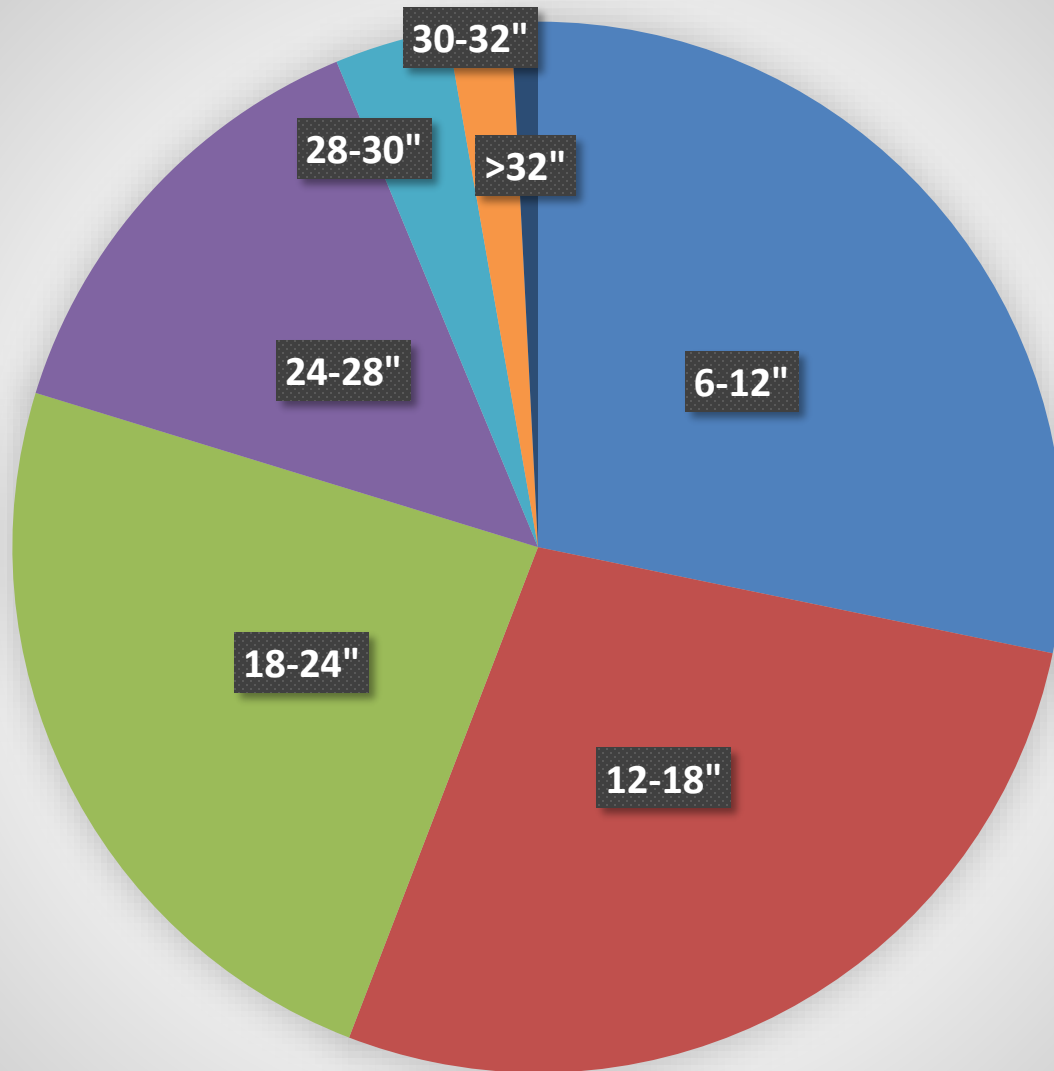
Channel Catfish Distribution

- **CCF are currently present in over 330 lakes**
 - 47 lakes with DNR catches of CCF > 30"
- **We know Channel Catfish are expanding within Minnesota**
- **From Fish Mapper:**
 - 104 lakes in 1990 -> 176 in 2000 -> 289 in 2016
- **Sources:** stocking, illegal stocking, natural migration, barrier removal
- **Milder winters and greater connectivity will likely lead to increased expansion**

Catfish Distribution



Minnesota River Channel Catfish

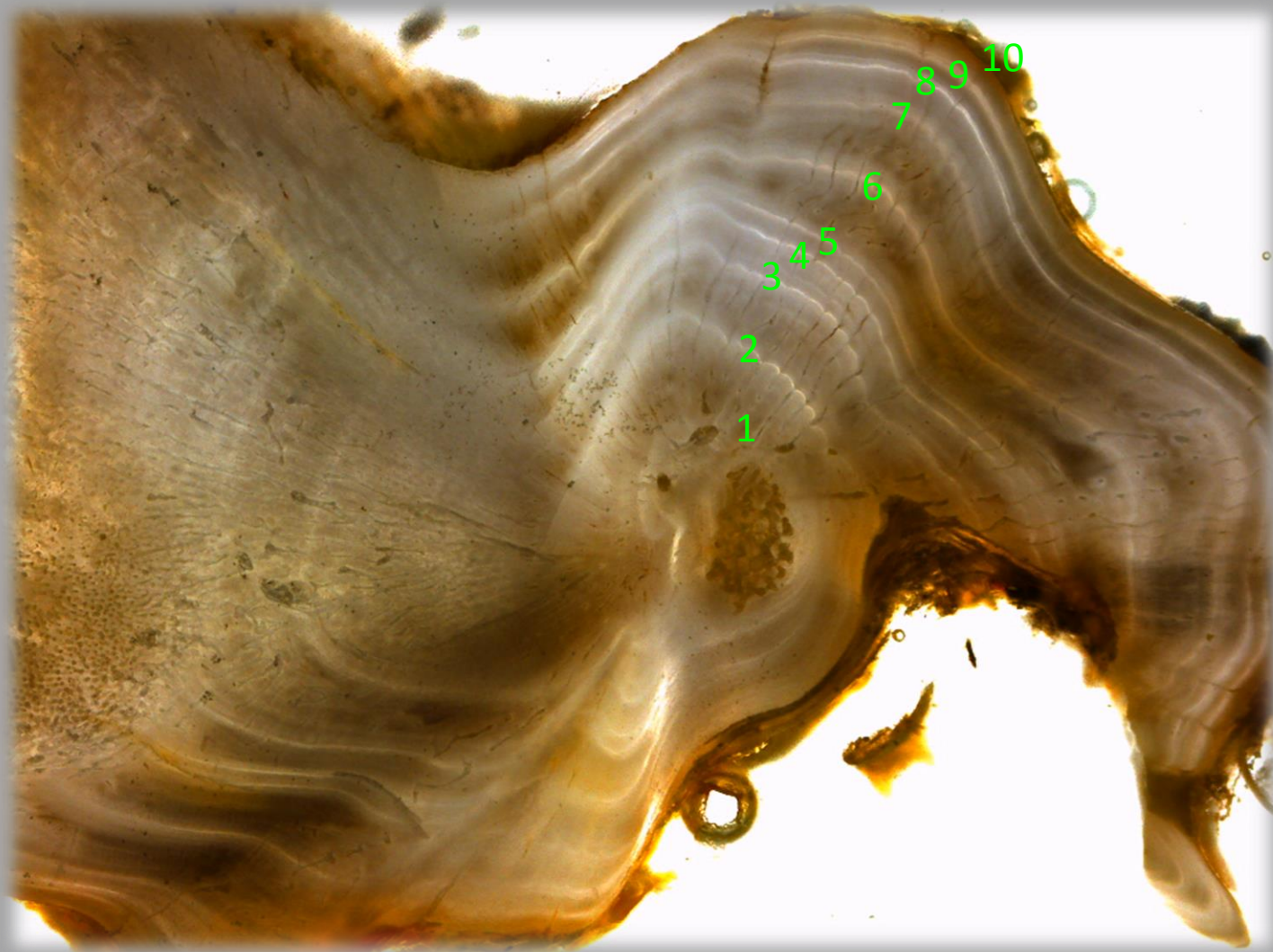


2093 CCF captured in hoop nets downstream of G-Falls

Age and Growth



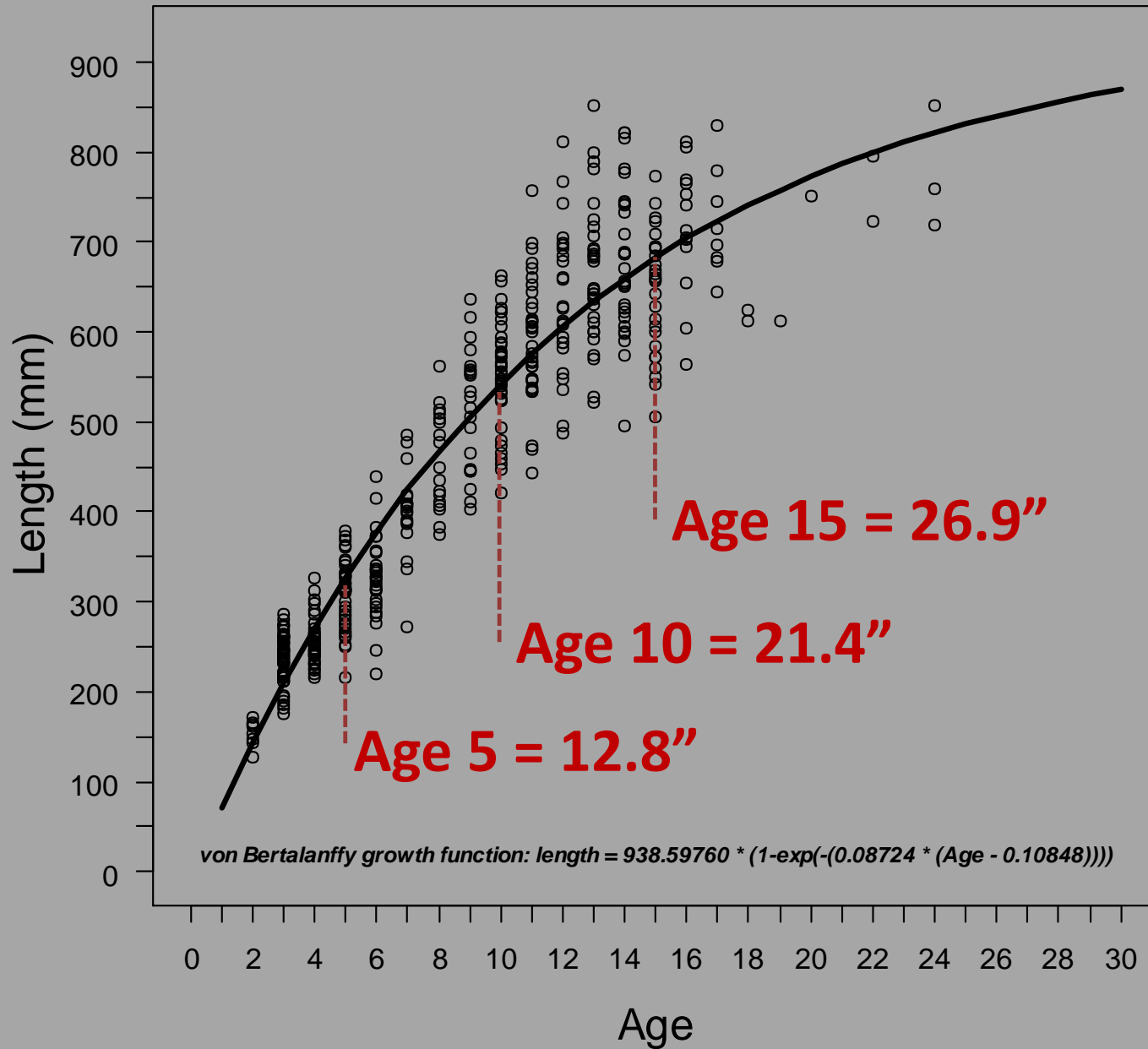
Age and Growth



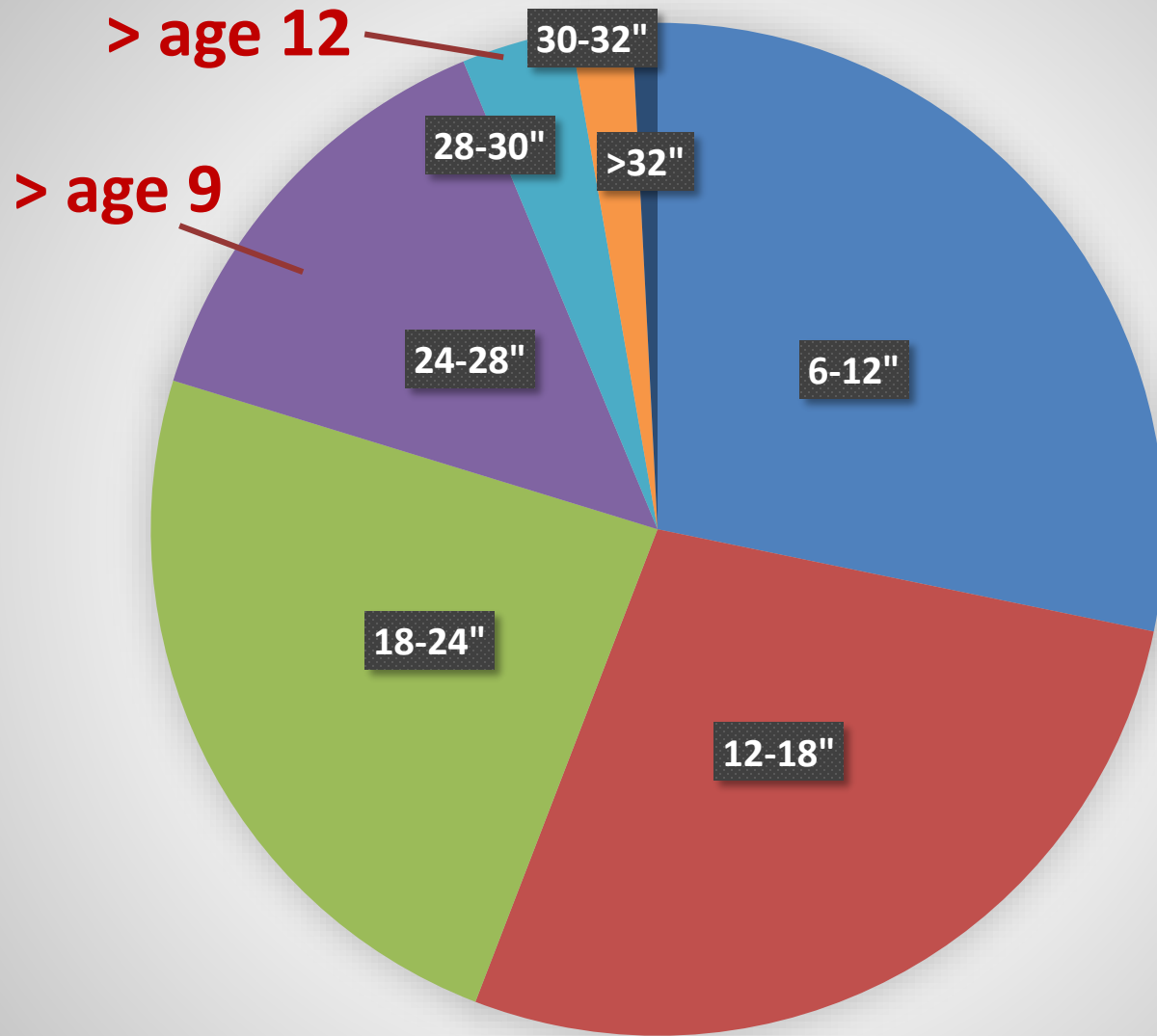
Channel Catfish Growth in the Minnesota River



Channel Catfish Growth in the Minnesota River



Minnesota River Channel Catfish



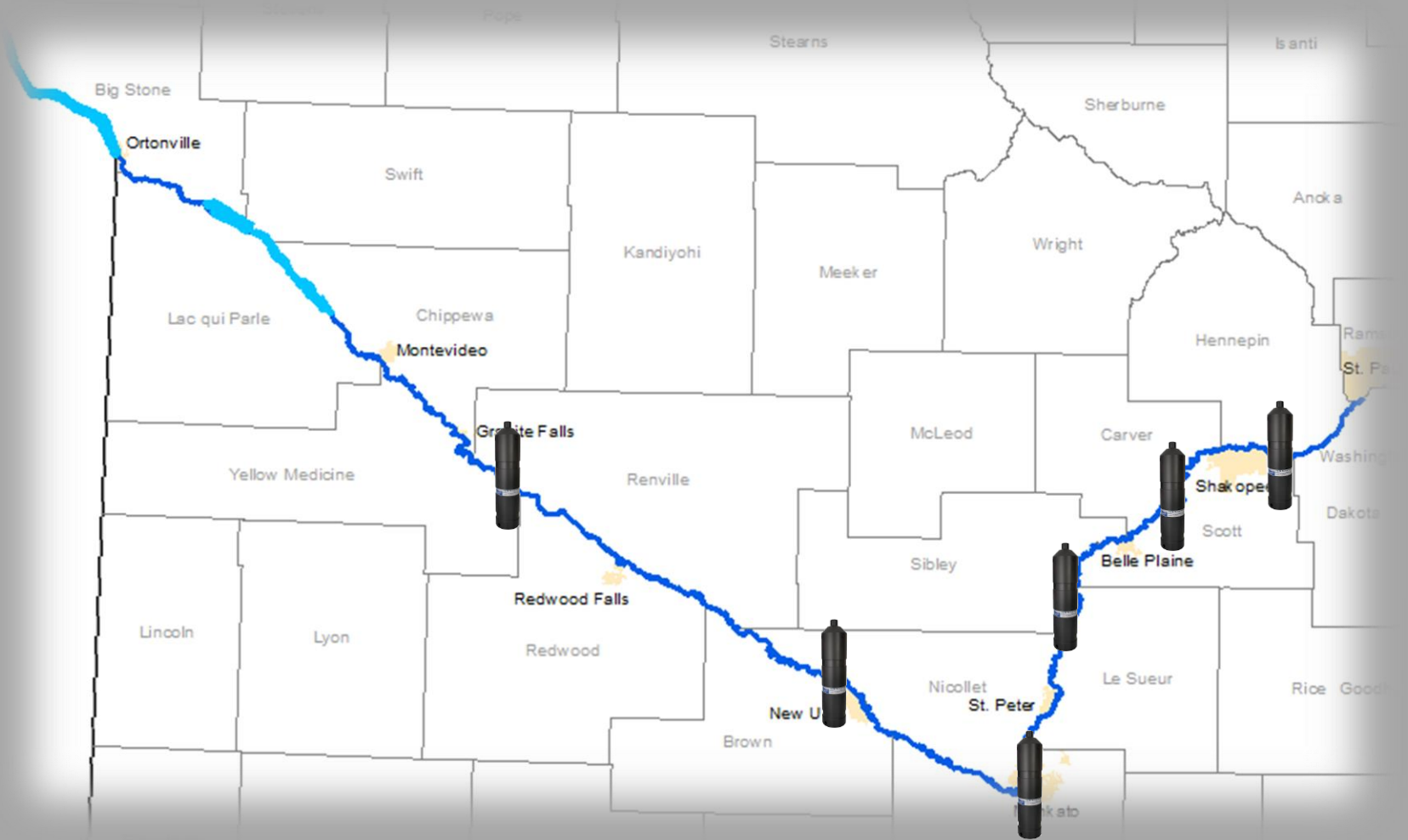
2093 CCF captured in hoop nets downstream of G-Falls

Acoustic Telemetry



Stationary Receivers

6 receivers currently installed in MN River



Stationary Receivers

As of Spring 2017

Pool 2

1 Paddlefish
1 Common Carp
1 White Bass
2 S. Buffalo
5 B. Buffalo

MNR

3 Shovelnose
Sturgeon

Stationary Receivers

As of Spring 2017

Pool 2

1 Paddlefish

1 Common Carp

1 White Bass

2 S. Buffalo

5 B. Buffalo

MNR

3 Shovelnose

Sturgeon



4-1





4-2





4-8





4-14





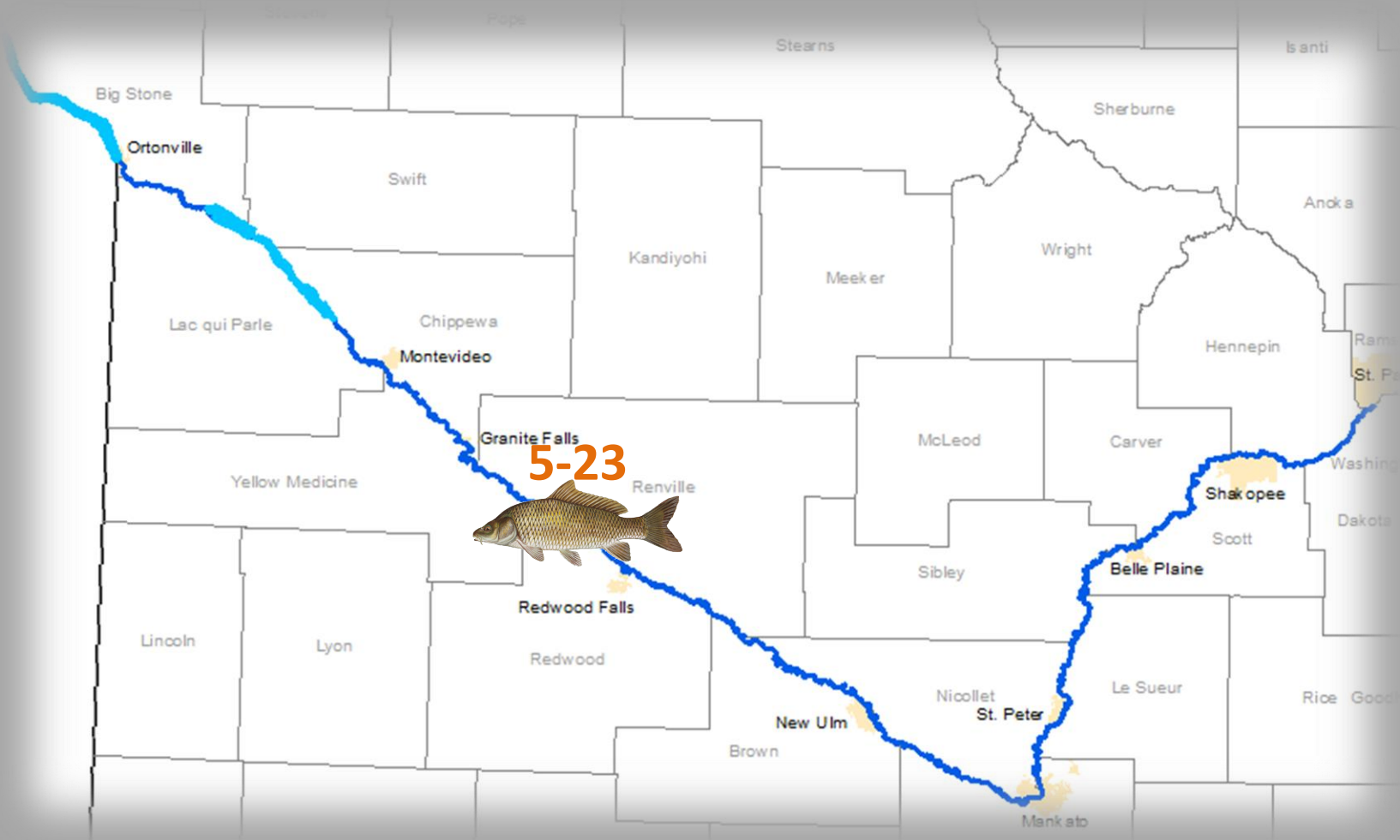
4-17





4-24





5-23





7-9



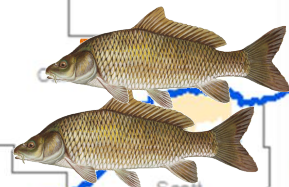


7-10





7-11



Shovelnose Sturgeon Telemetry

North Redwood 8-29



North Redwood 8-30



53220
53221
53222
53223

53225

53226

North Redwood 9-12



53227

53220

53221

53222

53225

53224

53226

North Redwood 10-7



54 river miles downstream in 25 days

North Redwood 10-20



53222

53221

53223

53220

53224

53226

North Redwood 10-27



53223



53221



53220



53225



53224

53226



North Redwood 11-28



53221

53220

53226

53224

North Redwood 3-27-2017



53221

53224

Upcoming Projects

**Evaluate Age and Growth of Channel Catfish
upstream of Granite Falls Dam**

**Conduct long-term telemetry study on Flathead
Catfish and Paddlefish**